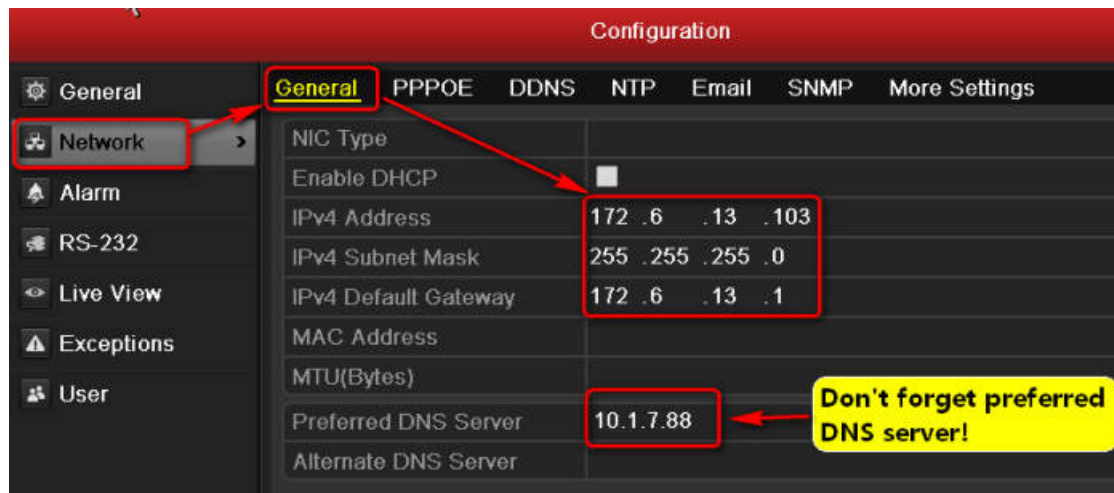


How to configure alarm function of NVR

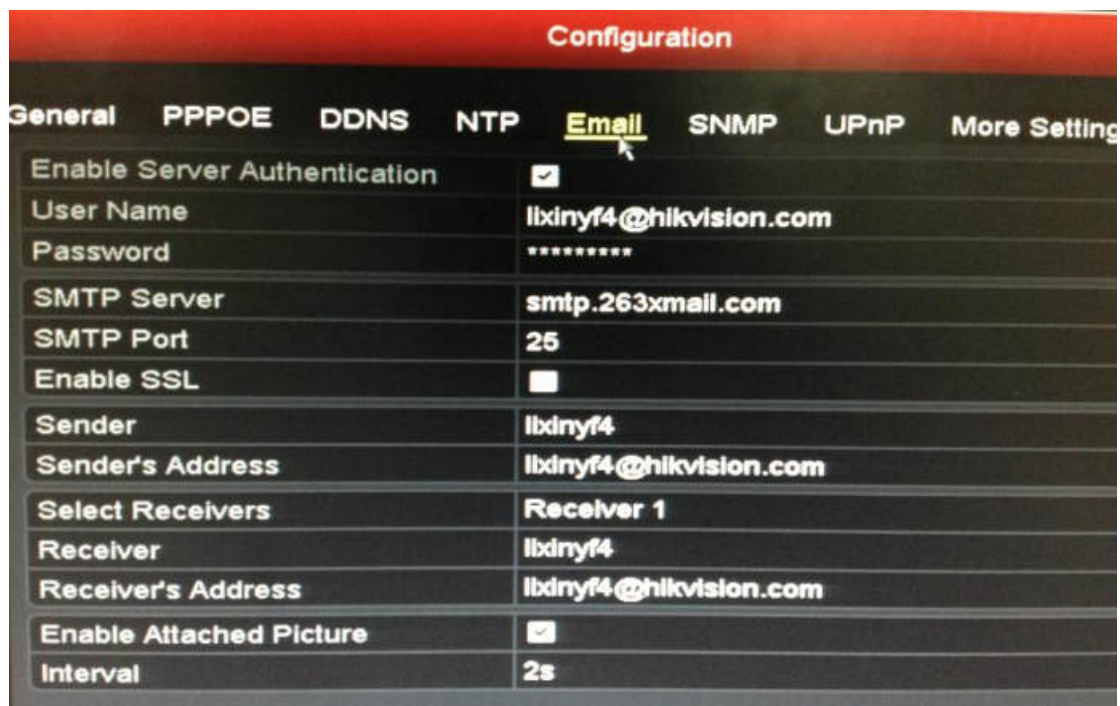
Part 1: Configuration of Alarm in triggering E-mail

Step 1: Click **Menu> Configuration> Network**

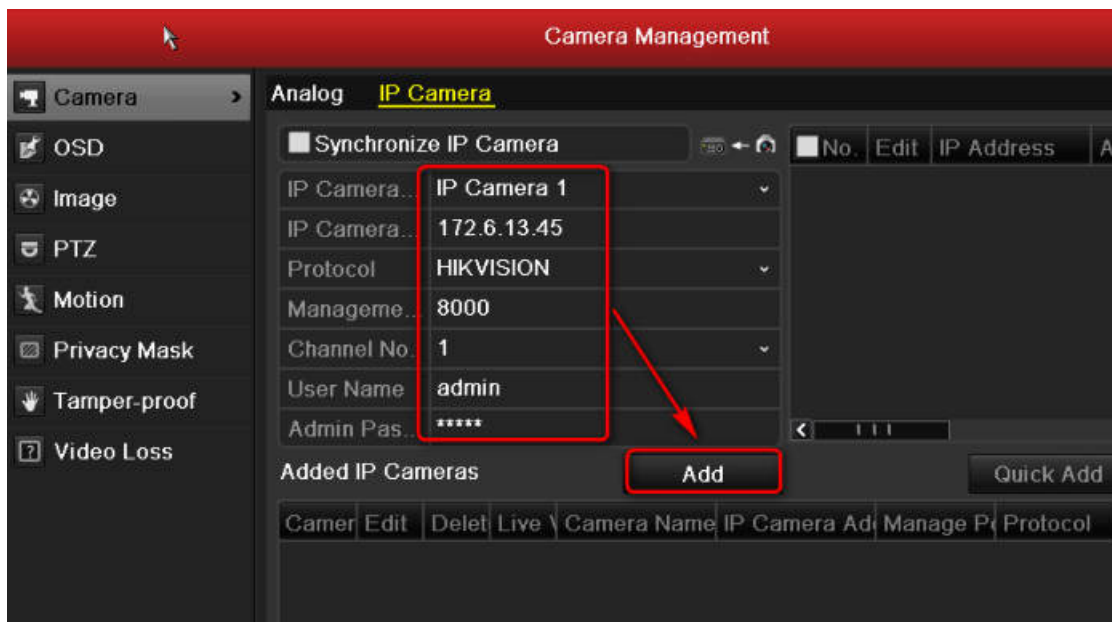
Configure IP, Subnet mask, Gateway and preferred DNS server of NVR.



Step 2: Click **Network>Email** to set the parameters of E-mail server as the followed snapshot shown.

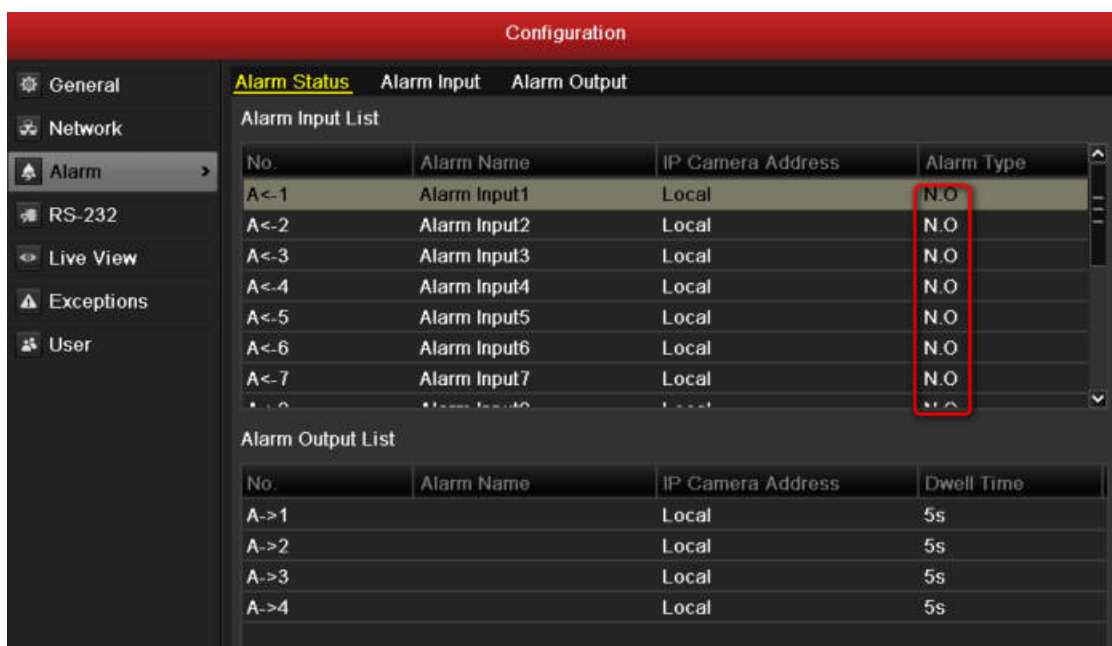


Step 3: Click **Menu>Camera**, and then type in the parameters of IP cameras to them.

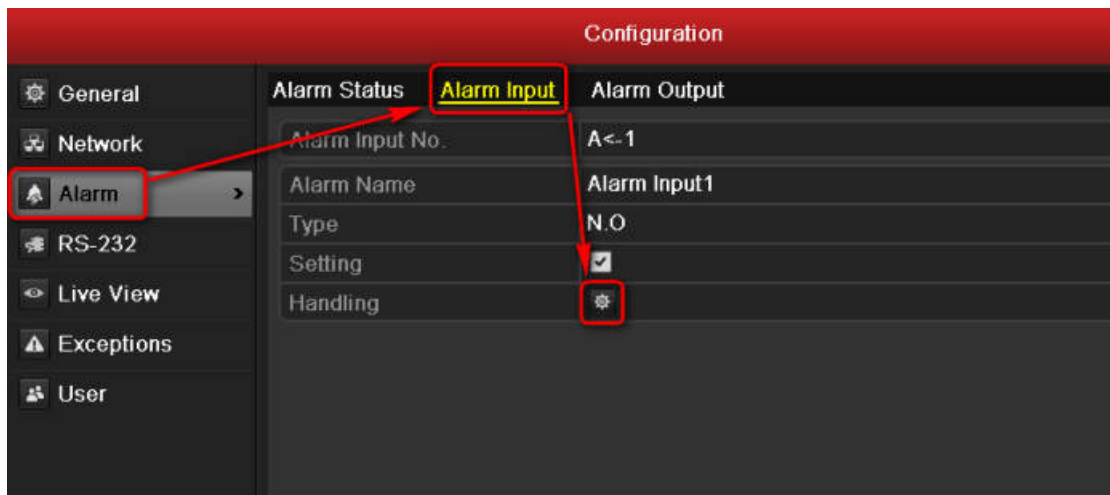


Step 4: Click **Configuration> Alarm** to check the type of Alarm input.

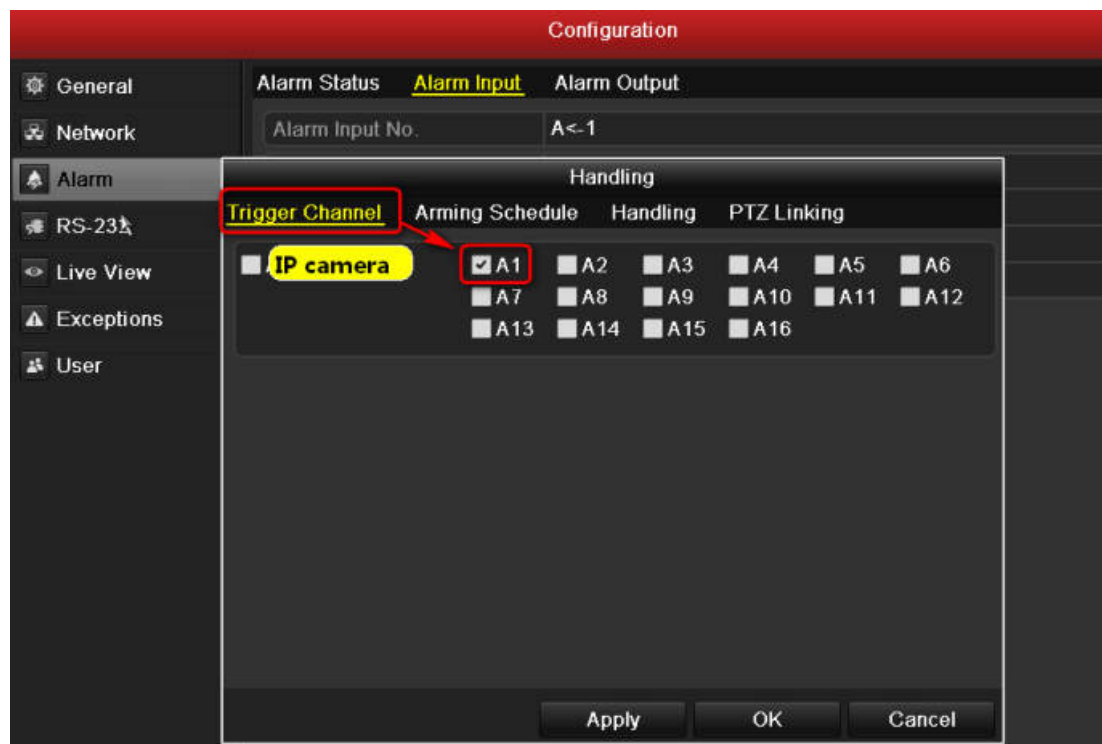
Please note: If the Alarm type is N.O (Normal open), a close alarm in will trigger this alarm. If the Alarm type is N.C (Normal close), an open alarm in will trigger it.



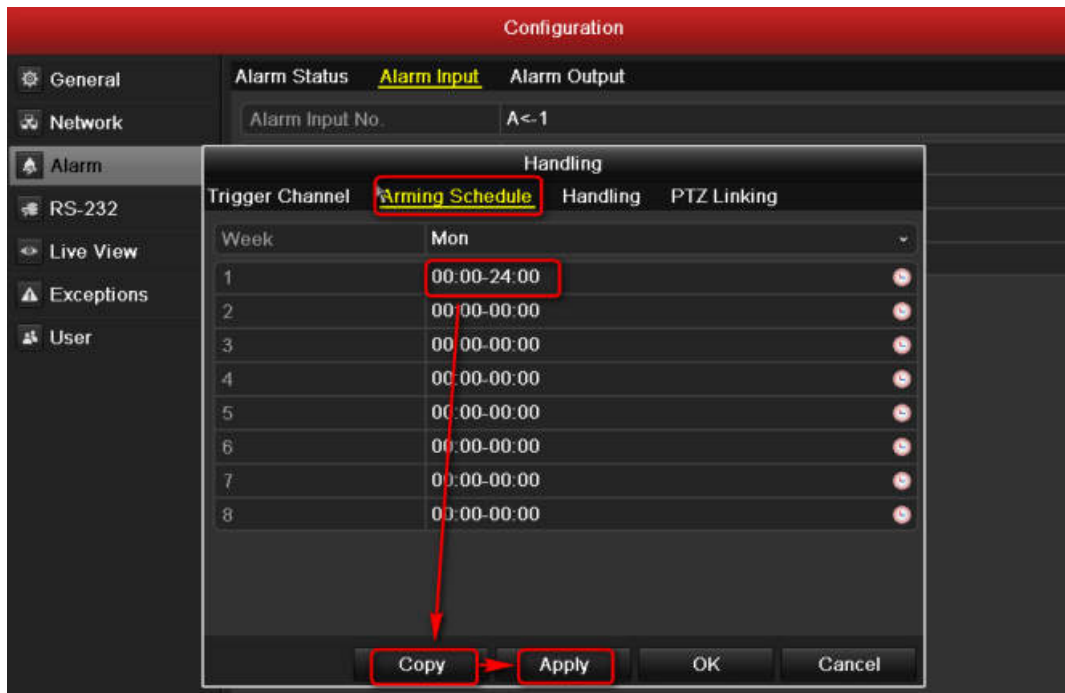
Step 5: Click **Alarm**> **Alarm Input**> **Handling**.



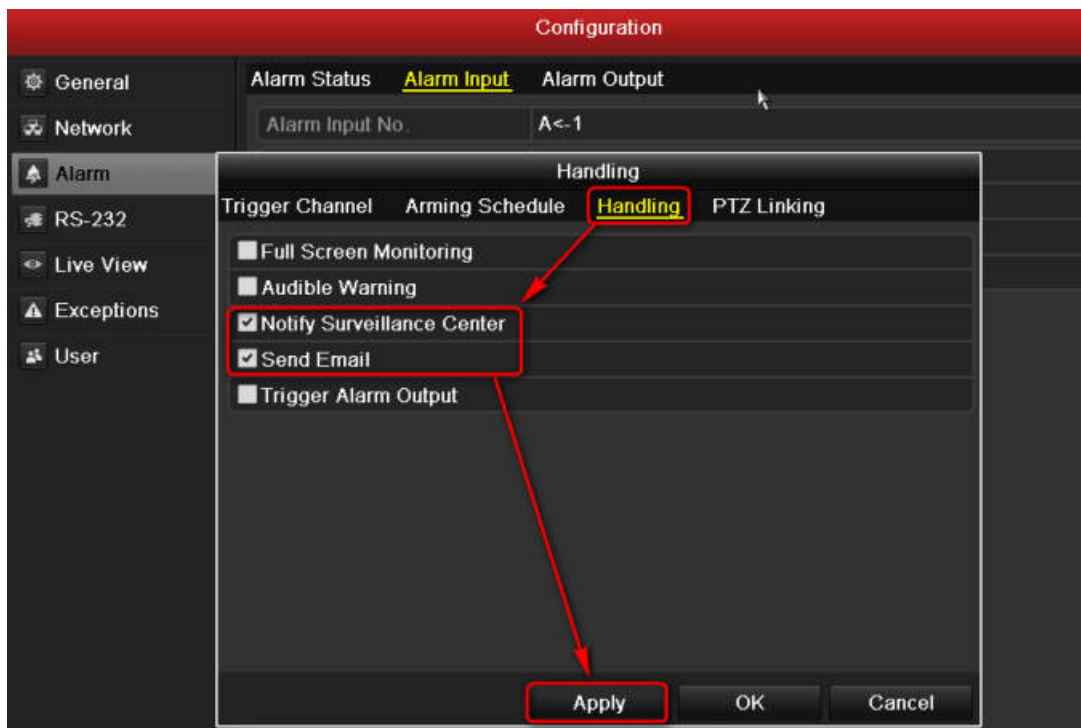
Step 6: Select the trigger channel such as channel 1.



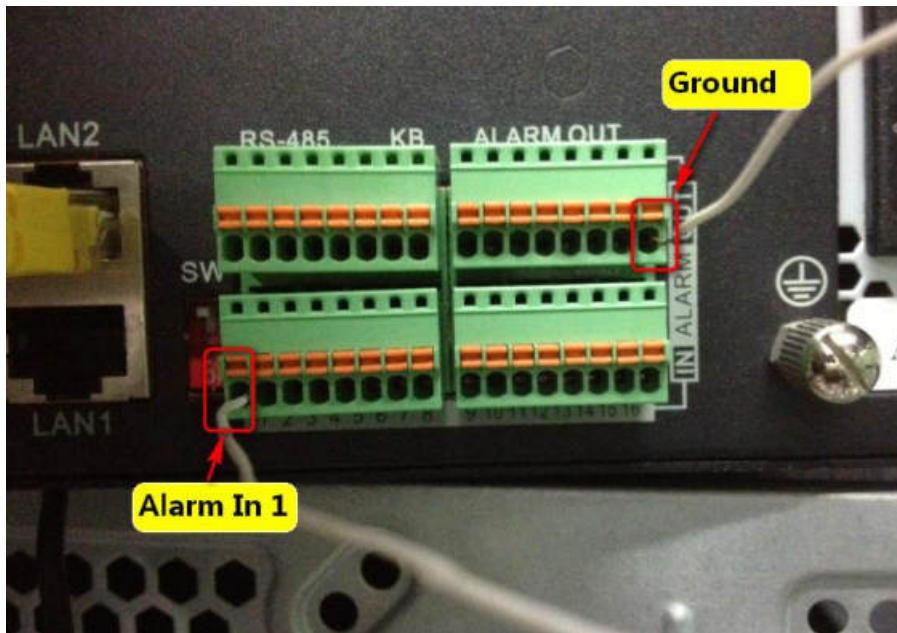
Step 7: Click **Arming schedule**, select **all day** and then copy it to all week.



Step 8: Click **Handling** and then enable **Notify Surveillance Center** and **Send Email**.

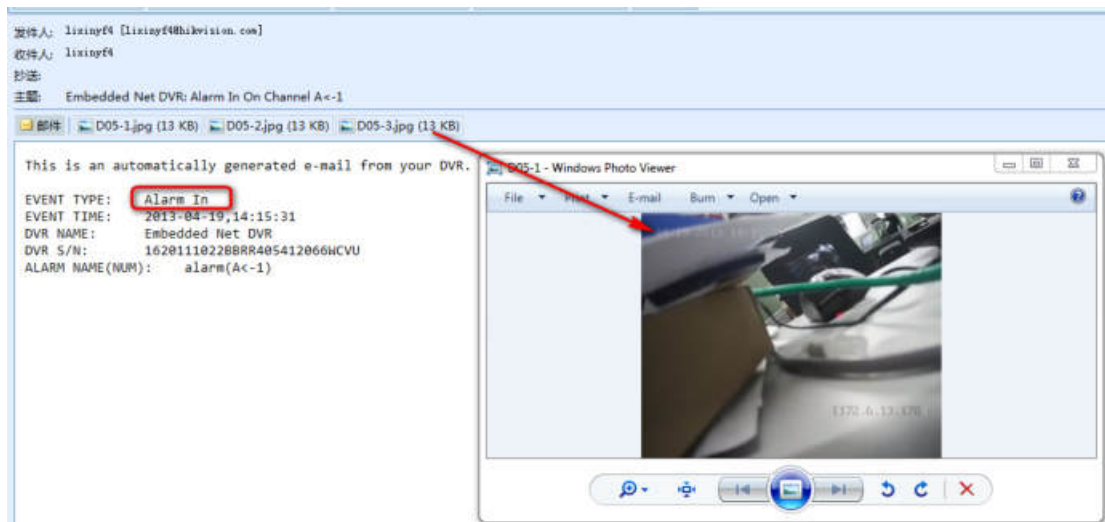


Step 9: Connect the **Alarm In 1** port and **G** port to your alarm system.



Step 10: When there is a N.C signal to Alarm 1, the NVR will send you an e-mail as the followed snapshot shown.

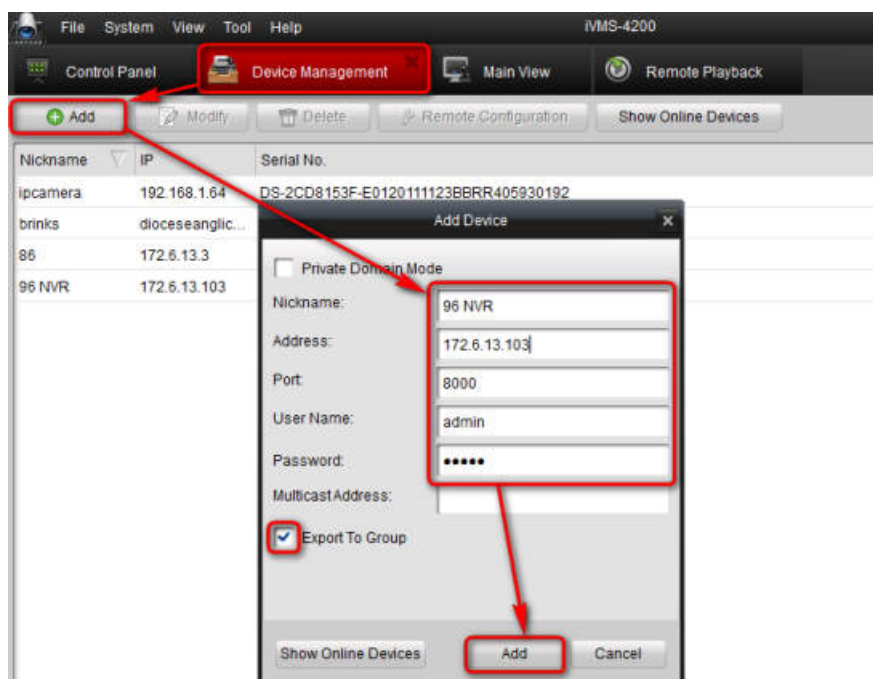
The Alarm In 1(A<-1) is triggered.



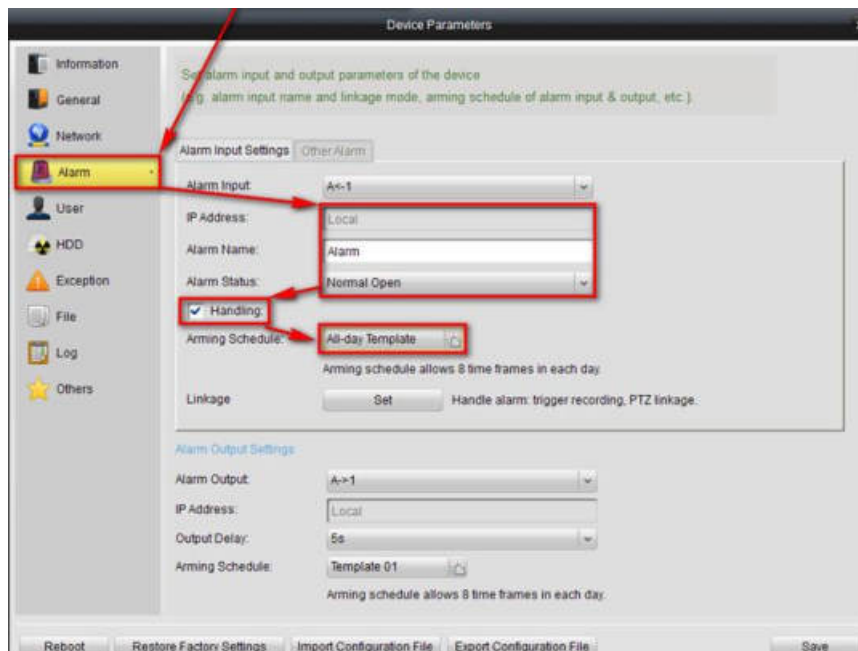
Part 2: Configuration of alarm notify surveillance center function in iVMS4200

Preparations: Please download iVMS-4200 software from the official website of Hikvision and install it on PC. Make sure the video can be viewed live.

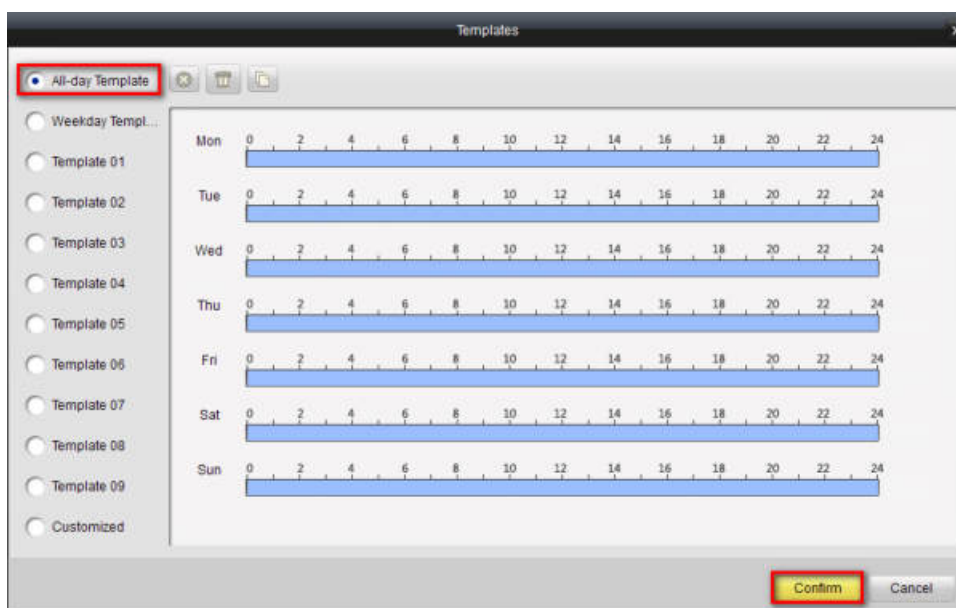
Step 1: Switch to **Device Management** and click the **Add** button.



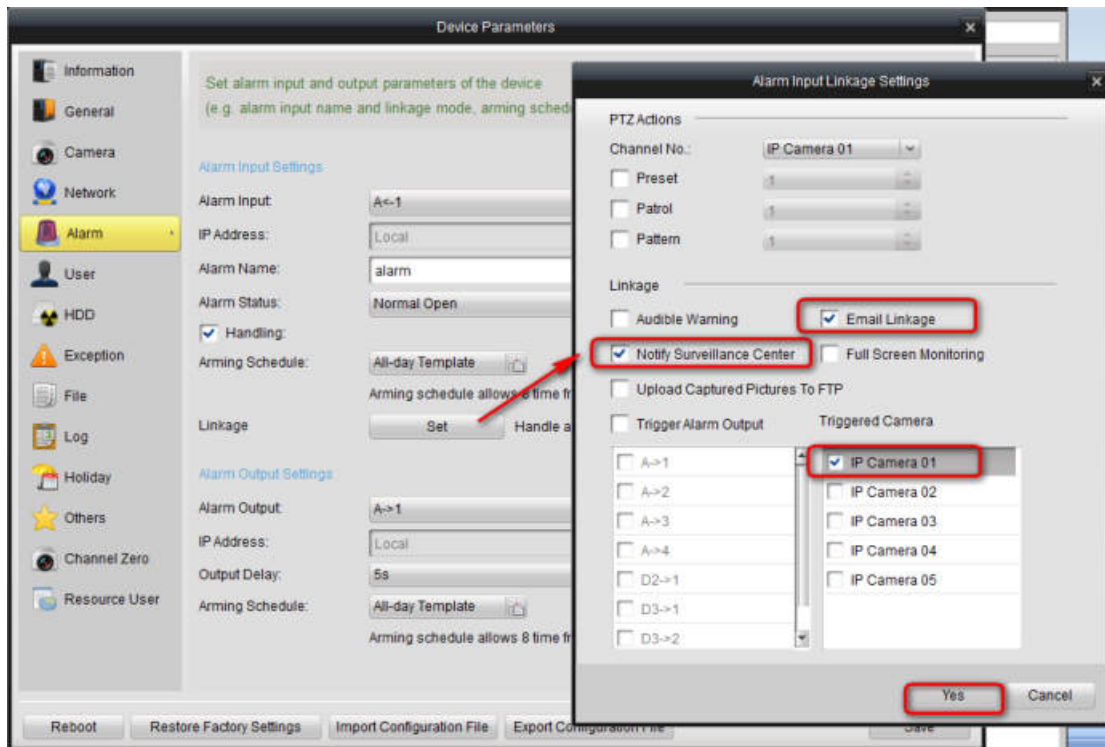
Step 2: Select NVR, click **Remote Configuration**> **Alarm**, and then configure alarm parameters.



Step 3: Enable **Handling** and then configure schedule of alarm. (Please note that if you have set them in local menu of NVR, this step will be no necessary.)



Step 4: Click **Linkage Set** and then enable **Notify Surveillance Center**, **Email linkage**, and **Triggered Camera**. (Please note that if you have set them in local menu of NVR, this step will be no necessary.)



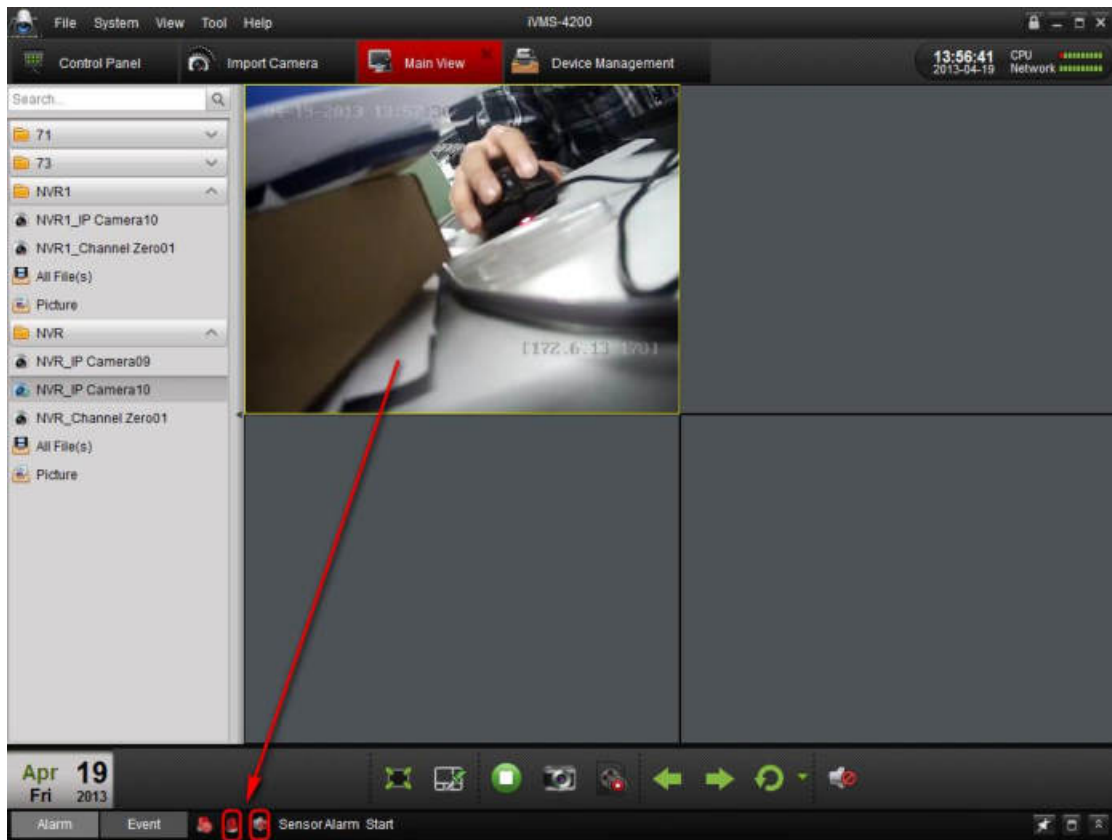
Step 5: Switch to **Main View**, select NVR, and then click the red button

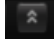


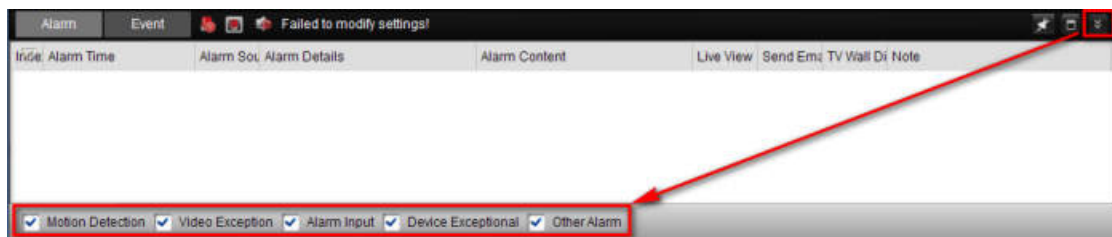
and



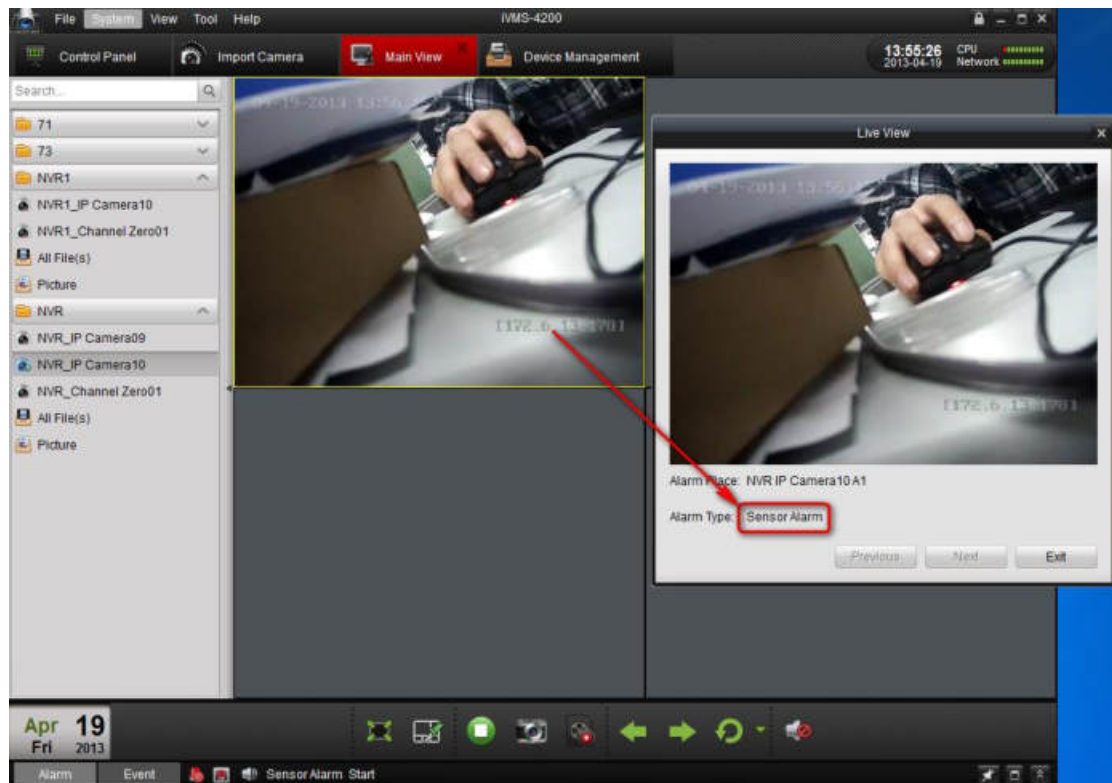
in bottom of the client to enable alarm function.



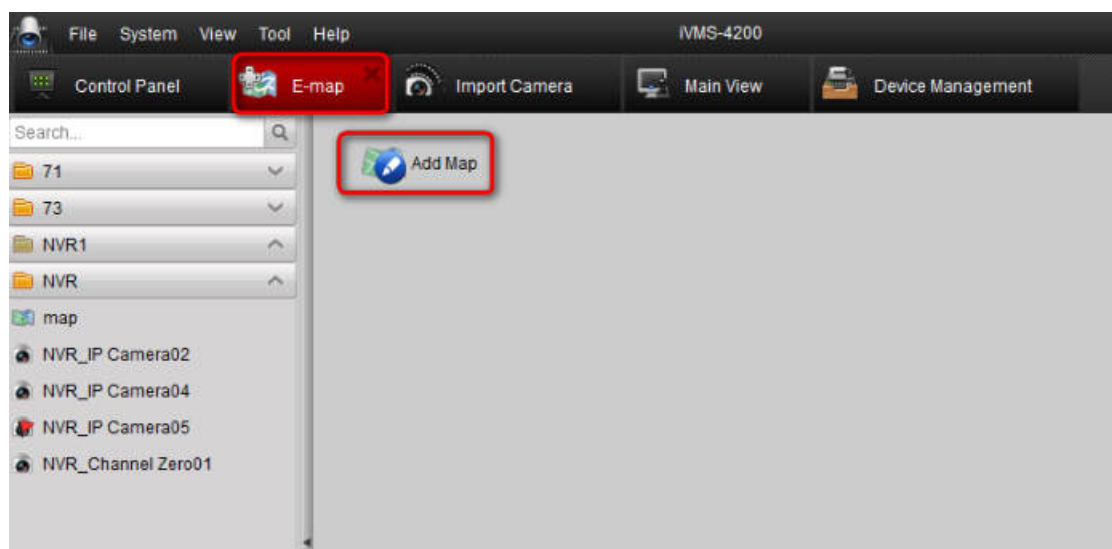
Step 6: Click  in bottom of the client and make sure **Alarm input** is enabled.

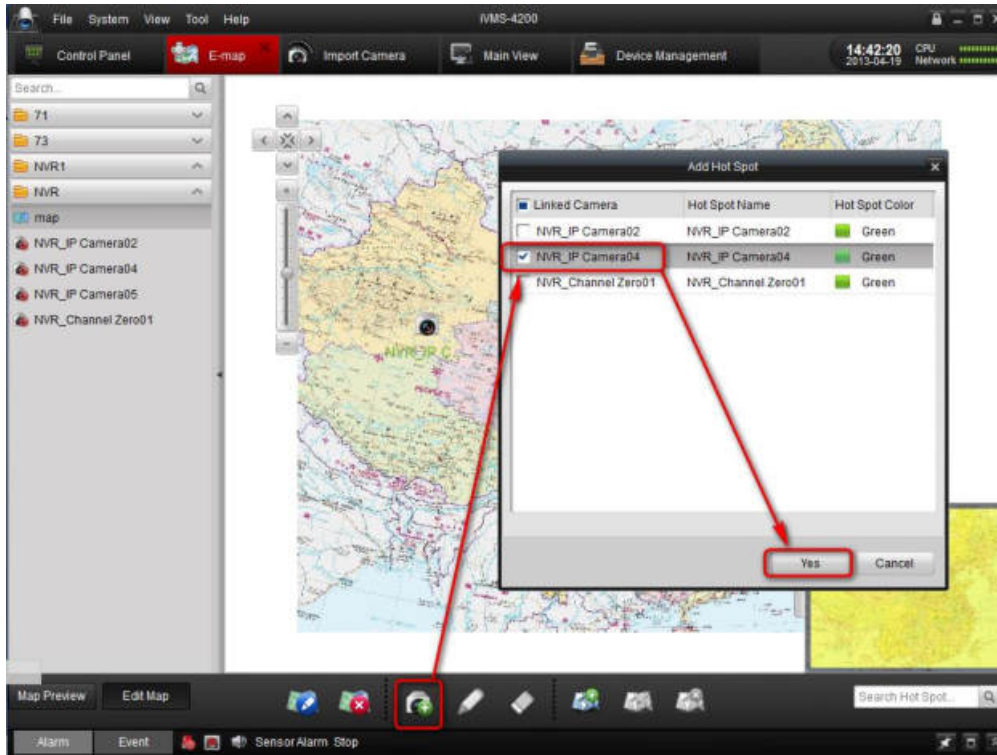


Step 7: The image will pop up and there will be a sound alarm when alarm in is triggered.

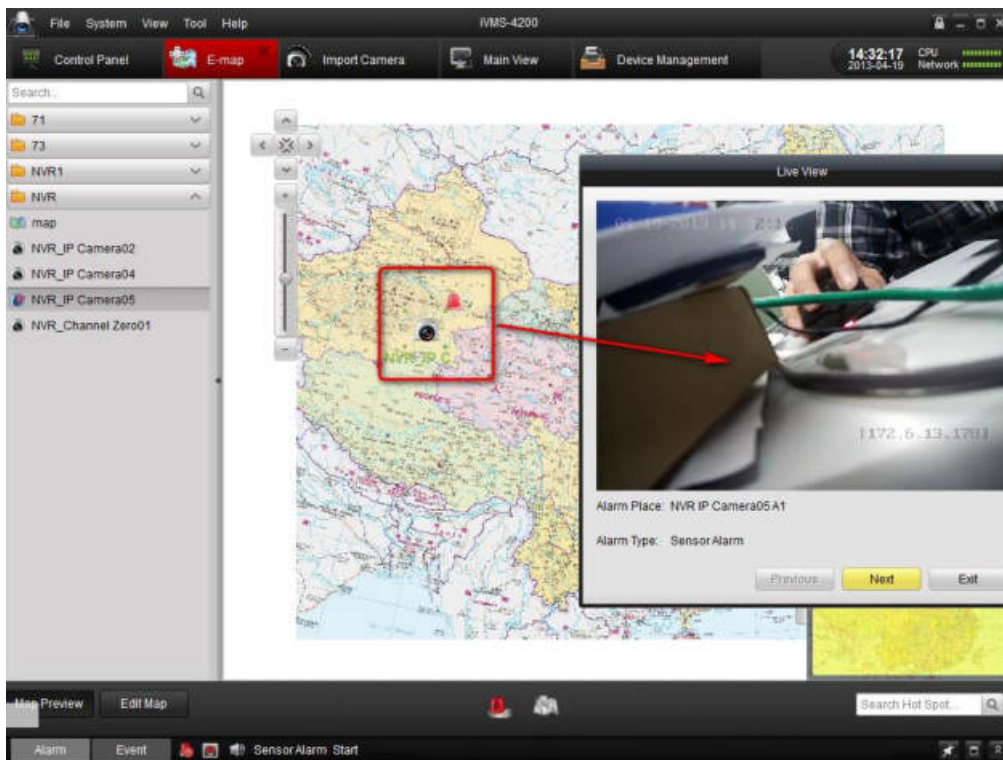


Step 8: Click E-map, add e-map and different site in Ivms4200.





Step 9: When the alarm is triggered, the image will pop up as the followed snapshot shown.



First Choice for Security Professionals
Hikvision Technical Support