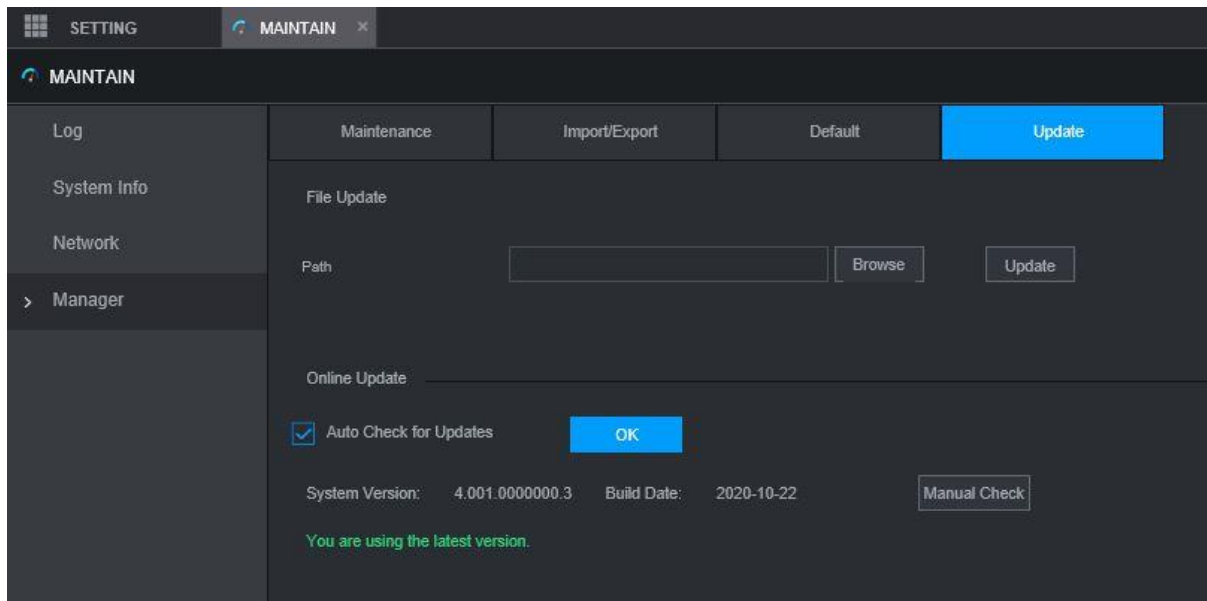


Hoe update ik de firmware van mijn recorder/camera

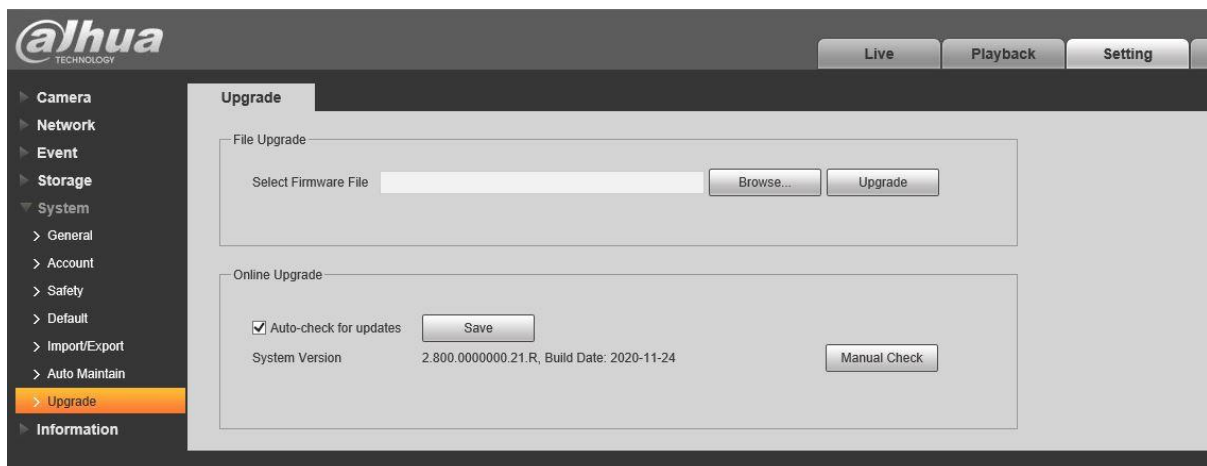
De firmware-update kan worden uitgevoerd via de webinterface of met behulp van de Config Tool.

WEB-interface

NVR: Ga naar Beheer > Manager > Update. Klik op browse en vervolgens op update.



Camera: Instelling > systeem > upgrade > klikt op browse en vervolgens op update.



1. Klik op search settings en voer het wachtwoord van uw apparaat in
2. Ga naar device upgrade
3. Klik op browse en voeg het firmware bestand toe
4. Klik op upgrade.

The screenshot displays the Configtool interface for device management. The sidebar on the left contains the following menu items: Modify IP, Device Upgrade (highlighted with a '2' badge), Device Config, System Settings, Password Reset, and Building Config. The main content area shows a header with '6 Device(s) found' and a refresh icon. A 'Search Setting' button with a '1' badge is located in the top right. Below the header, there is a 'Batch Upgrade' button and a search input field. The main table lists six devices with the following columns: NO., Model, IP, Version, Upgrade File Path, and Operate. The first row is highlighted with a '3' badge in the 'Upgrade File Path' column and a '4' badge in the 'Operate' column.

<input type="checkbox"/>	NO.	Model	IP	Version	Upgrade File Path	Operate
<input type="checkbox"/>	1	VTO2000A	192.168.4.30	4.300.0000000.2.R	3	4
<input type="checkbox"/>	2	VTH2421F-P	192.168.4.152	4.500.0000000.7.R		
<input type="checkbox"/>	3	VTO3211D	192.168.4.122	4.300.0000000.5.R		
<input type="checkbox"/>	4	VTO2202F	192.168.4.100	4.500.0000000.5.R		
<input type="checkbox"/>	5	VTH1510CH	192.168.4.166	4.300.0000000.8.R		
<input type="checkbox"/>	6	DHI-NVR52...	192.168.4.159	4.001.0000000.3		