



## Statement

Thank you for purchasing our product! This quick user guide will talk about main usages of the product. More information can be found on our website and the help center. This user guide may contain inaccurate content due to hardware and software upgrade. It is subject to change without previous notice.



## Safety caution

- 1 Please do not put any fluid container on the product.
- 2 Please use the product in ventilated environment and prevent blocking the vents.
- 3 Please use included power supply with the product to prevent damage to the product.
- 4 Please use the product under its standard working temperature and humidity. (Advised in this manual or distributor's website)
- 5 Dust on PCB may cause short circuit. It is suggested to clean the dust on PCB timely to make the product work properly.
- 6 Please obey the regulation and policy in your country and area during the installation of this product.



## Out of box audit

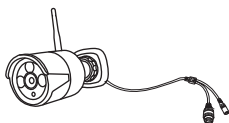
After receiving the product, please check all products and accessories to distributor's Package Includes information. If any is missed or damaged, please contact the distributor.

Packing List		
S/N	Item	Quantity
1	Cámara IP WiFi	1pc
2	User guide	1pc
3	DC 12V1A power supply	1pc
4	Screw bag	1pc



## IP Camera description

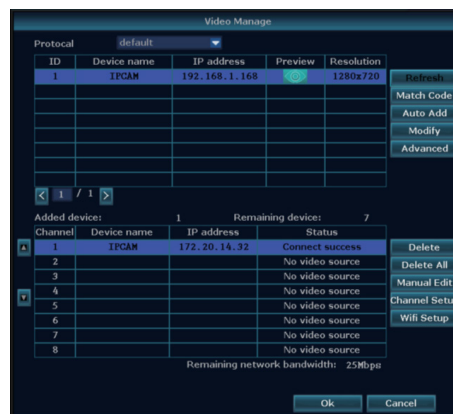
- 1 **WiFi antenna:** WiFi connection with NVR.
- 2 **DC Port:** input power 12V 1A.
- 3 **RJ45 Port:** for matching code and wired connection between IPC and NVR



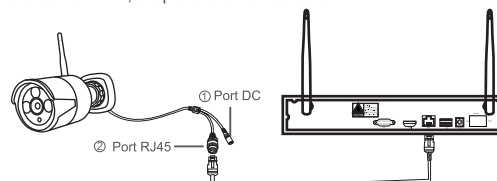
## Add Cameras

Before leaving factory, NVR kit is already matched with the cameras included in the kit, the image will come out when the kit is powered.

To add extra cameras in free channels of the NVR, access the NVR configuration menu: Right click on main menu and click video management and enter the interface. There are two ways to add IPC, "match code" and "auto add". Choose "auto add" to add cameras that has been connected by network cable. Choose "match code" to add cameras that has been connected by wireless mode and IP address is 172.20.14.X.



Anyway, there is range limitation for the WIFI signal from NVR. When cameras are out of this range, they can't be connected to NVR wirelessly. Then users can use network cable to connect cameras and NVR, as picture showed below:



## Warning

**Notes:** La garantía cubre posibles defectos de fabricación y fallos de funcionamiento en un uso normal.

Device will not in guarantee if caused by below reason:

1. Accident; negligence; disaster; mis-operation.
2. Do not conform to the environment and conditions, such as power improper, working temperature too high or too low, lightning stroke, etc.
3. Ever be maintained by other center which not belong to the real factory.
4. Goods already sold more than 12 months.