



SBV-A14B

Back Box



Key Features

- Product dimensions / weight :
Ø144.0x51.0mm(Ø5.67x2.01"), 440g
- Mount Screw size : TR20
- Conduit hole : 19.1mm(3/4") (M25)

Compatible Accessories (Optional)



QNV-6072R



QNV-6072R1



QNV-6082R



QNV-6082R1



QNV-7082R



QNV-8080R



QNV-8081R



LNV-6072R



ANV-L6012R



ANV-L6082R



ANV-L7012R



ANV-L7082R



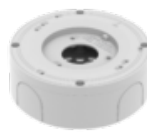
ANO-L6012R



ANO-L6022R

SBV-A14B

Back Box



Specifications

Mechanical	
Color	White
Material	Aluminum
RAL code	RAL9003
Product dimensions / weight	Ø144.0x51.0mm(Ø5.67x2.01"), 440g
Mount Screw size	TR20
Conduit hole	19.1mm(3/4") (M25)
Supported products	QNV-6072R/6072R1/6082R/6082R1/7082R/8080R ANV-L6012R/L6082R/L7012R/L7082R ANO-L6012R/L6022R/L6082R/L7012R/L7022R/L7082R ANE-L6012R/L7012R/L7012L LNV-6072R

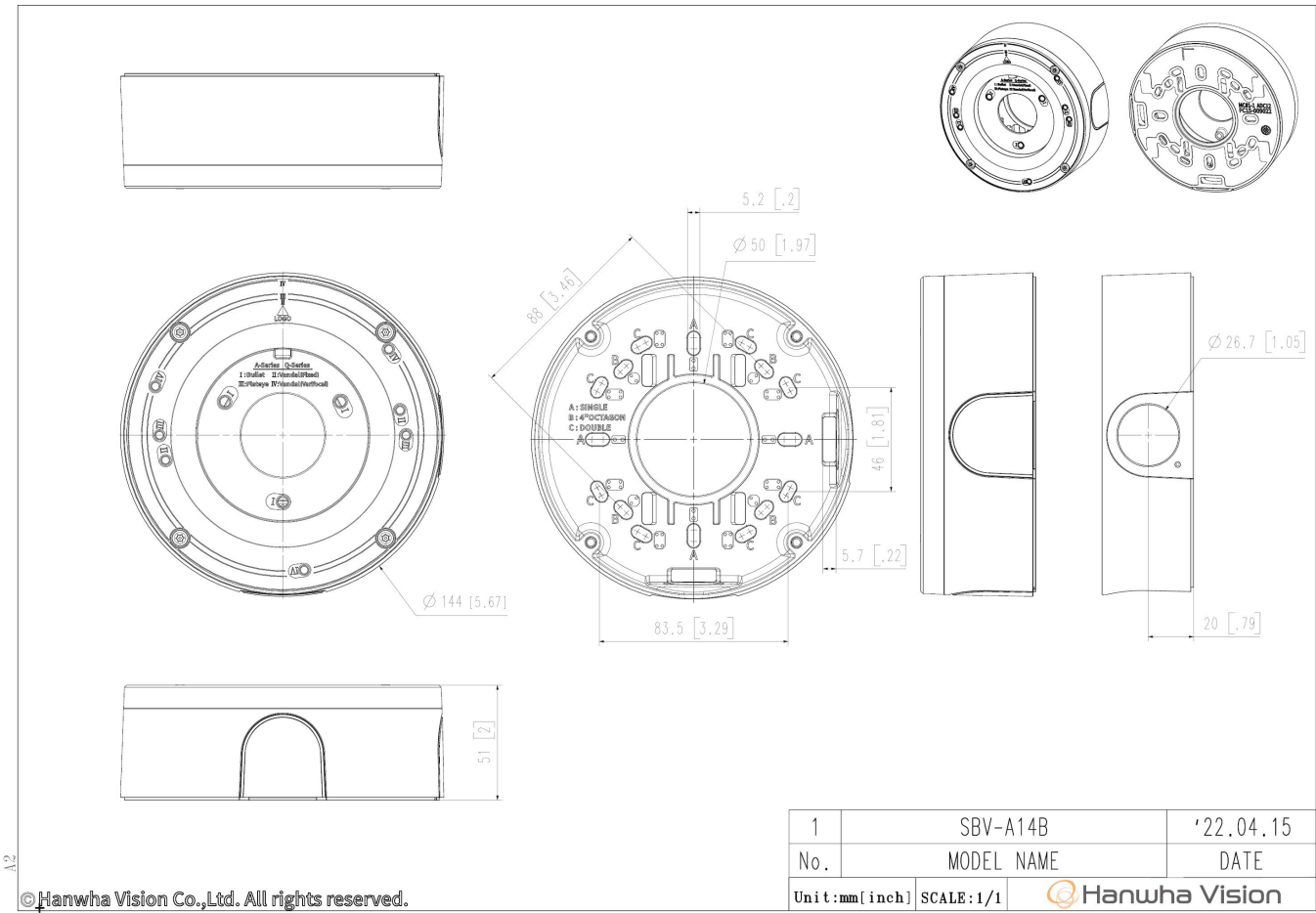
SBV-A14B

Back Box



CAD

Unit:mm [inch]



© Hanwha Vision Co., Ltd. All rights reserved.