



## **How to Get a Uniview Cameras' RTMP Stream?**

Title:	How to Get a Uniview Cameras' RTMP Stream?	Version:	V1.0
Product:	IPC	Date	6/28/2023

## How to Get a Uniview Cameras' RTMP Stream?

### Description

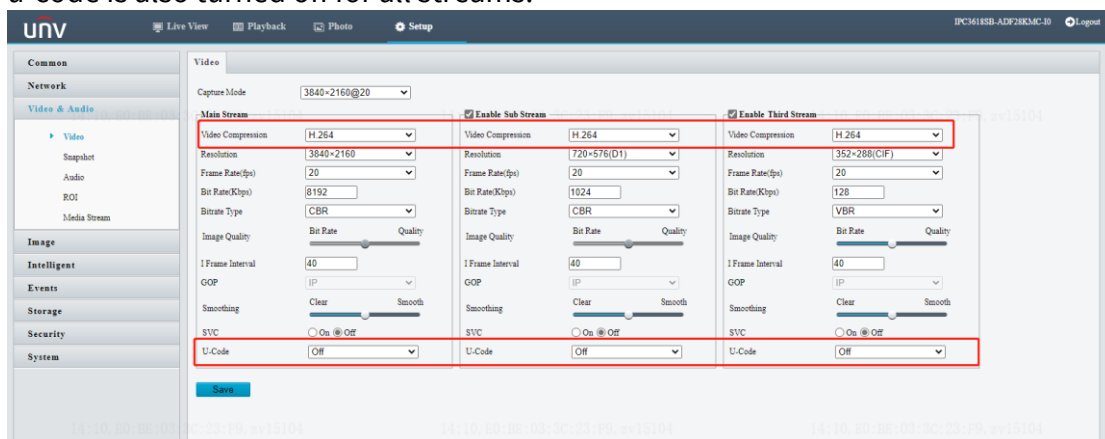
If a customer wants to play live view stream on a third-party platform such as YouTube, here are some settings that need to be set up on a Uniview camera's web interface.

**Note:** This method is applicable to most scenarios. If the method cannot solve your problem, it is recommended to consult our Tech Support Team.

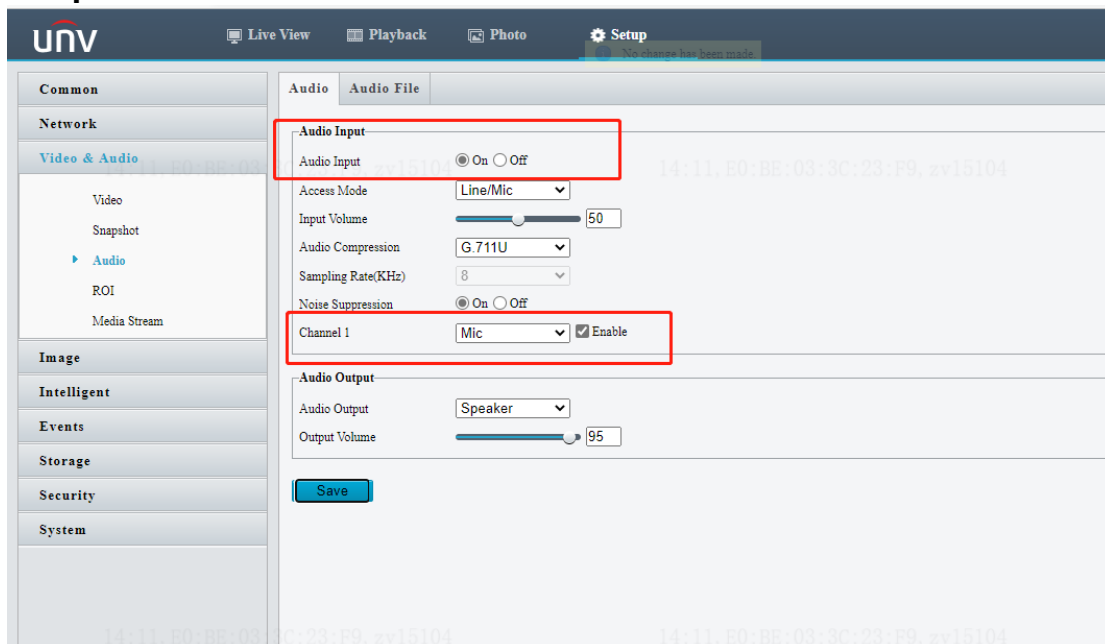
[https://global.uniview.com/Support/Service\\_Hotline/](https://global.uniview.com/Support/Service_Hotline/)

### Operating Steps

**Step 1** Check the Uniview camera's web interface under **Setup>Video&Audio>Video** to make sure the Uniview camera is using the Video Compression format H.264 and the u-code is also turned off for all streams.

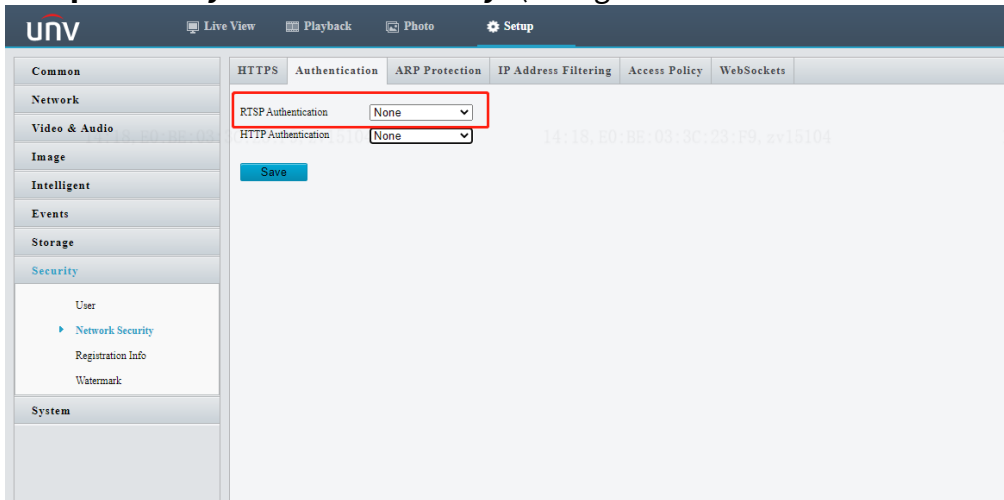


**Step 2** Turn on the audio stream of the camera from the camera's web interface under **Setup>Video & Audio>Audio**.



Title:	How to Get a Uniview Cameras' RTMP Stream?	Version:	V1.0
Product:	IPC	Date	6/28/2023

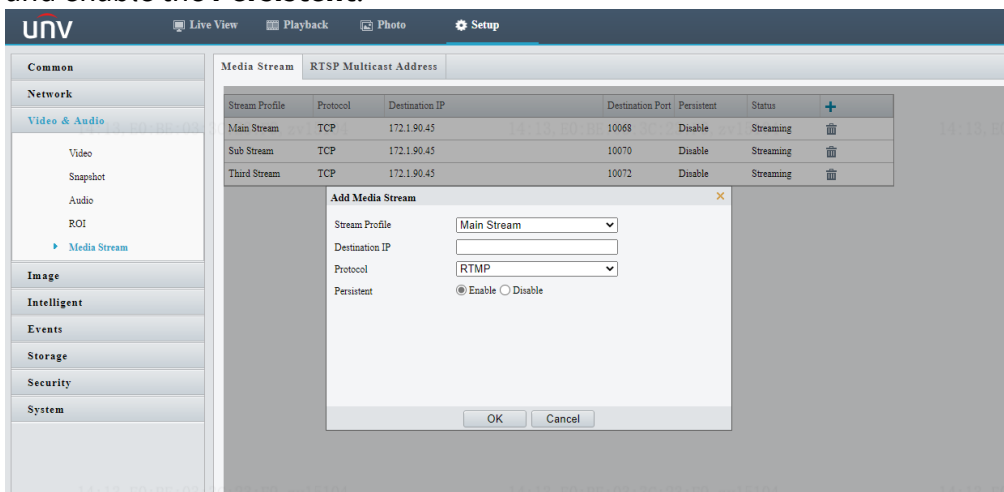
**Step 3** Turn off the RTSP authentication of the camera under **Setup>Security>Network Security** (change the RTSP authentication to none).



**Step 4** Set up the RTMP Media Stream under **Setup>Video & Audio>Media Stream**.

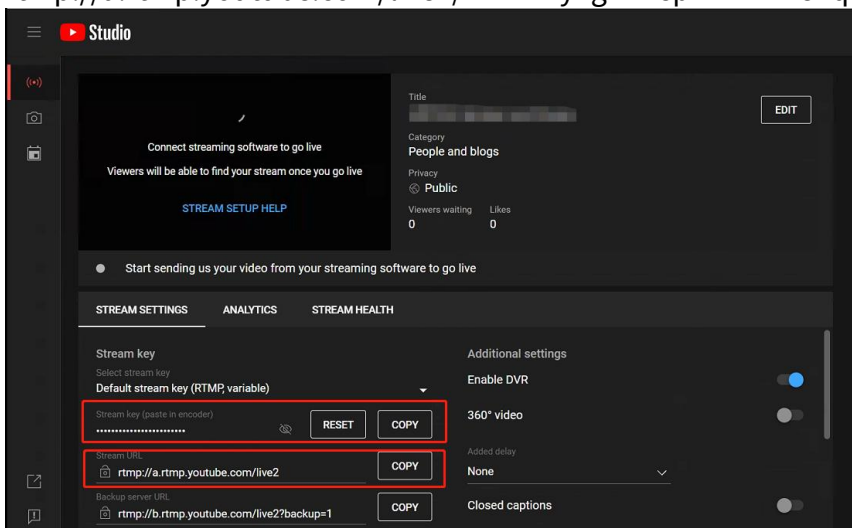
**Step 4.1** Click the plus sign to add a new stream (Main/Sub/Third Stream you want to use).

**Step 4.2** Change the protocol to **RTMP**, put in the Destination IP given by the website, and enable the **Persistent**.



Take YouTube as an example:

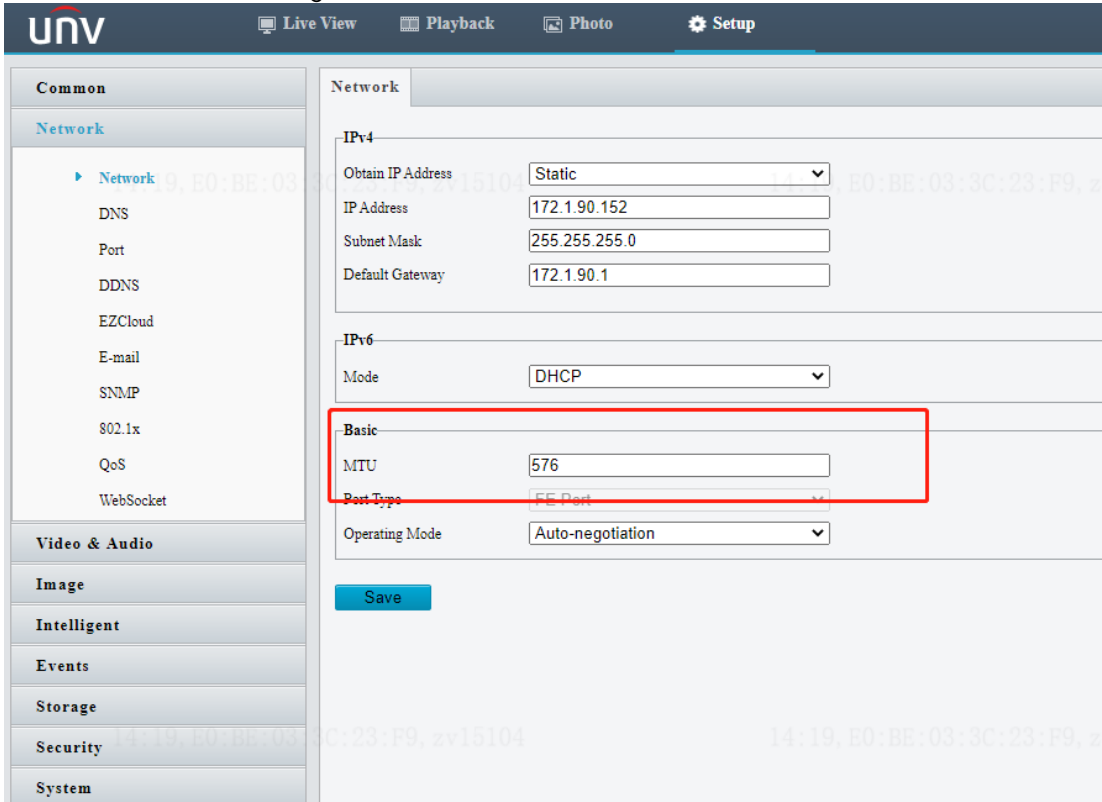
Copy both the URL (rtmp://a.rtmp.youtube.com/live2) and the Stream Key (kmhm-y7g2-msph-2mz7-84qm) and combine them as: rtmp://a.rtmp.youtube.com/live2/kmhm-y7g2-msph-2mz7-84qm



Title:	How to Get a Uniview Cameras' RTMP Stream?	Version:	V1.0
Product:	IPC	Date	6/28/2023

Put in the correct URL on the web interface and click Save so as to get the RTMP stream back to work.

**Note:** Sometimes the MTU value of the camera under **Setup>Network>Basic** needs to be lowered for a smoother RTMP streaming.



The screenshot shows the UNV web interface with the 'Setup' tab selected. The left sidebar contains a tree view with 'Common' and 'Network' expanded. Under 'Network', the 'Basic' tab is selected. The main content area shows the 'IPv4' and 'IPv6' settings. The 'IPv4' section has fields for 'Obtain IP Address' (Static), 'IP Address' (172.190.152), 'Subnet Mask' (255.255.255.0), and 'Default Gateway' (172.190.1). The 'IPv6' section has a 'Mode' dropdown set to 'DHCP'. The 'Basic' section is highlighted with a red box and contains the 'MTU' field set to 576, the 'Port Type' dropdown set to 'FE Port', and the 'Operating Mode' dropdown set to 'Auto-negotiation'. A 'Save' button is located at the bottom of the form.